

SPIDER LIFT

IM R 20 DA

20 m
working height

STANDARD EQUIPMENT

- Automatic outriggers levelling with electronic inclinometer
- Outrigger pads (Ø 200 mm)
- Emergency hand pump
- Cylinder holding valve
- Electronic hour meter
- Momentum device
- Load cell
- Hydraulic Jib
- Rubber tracks
- Hydraulically adjustable tracks width
- Double speed traction
- Air / Water outlet in the platform
- 230V - 16 A outlet in the platform
- Wireless radio-control box
- Upper control box cover

PETROL/DIESEL EQUIPMENT

- Honda GX390 petrol engine - 8.7 kW 3600 rpm
- Kubota Z602 diesel engine - 12.5 kW 3600 rpm
- 230V - 16 A electro-pump for indoor use

LITHIUM EQUIPMENT

- Lithium batteries 48V / 110Ah
- Electric motor 48V / 4.5 kW AC low voltage

HYBRID EQUIPMENT

- Lithium batteries 48V / 110Ah
- Electric motor 48V / 4.5 kW AC low voltage
- Honda GX160 petrol generator - 3.6 kW 3600 rpm

OPTIONALS

- Non-marking rubber tracks
- Oversized outrigger pads (Ø 350 mm)
- Rectangular outrigger pads
- Working light in the platform
- Aluminium basket 0.90 x 0.70 x 1.10 m
- Winch kit
- IMERVIEW kit

PETROL/DIESEL OPTIONALS

- 12V emergency electro-pump

LITHIUM/HYBRID OPTIONALS

- 48V emergency electro-pump

BENEFITS

- ✓ New removable control box with high resolution 4.3" display and easier operator interaction for better machine control.
- ✓ Return-to-Home function for automatic closing of the platform.
- ✓ Upper control box cover for complete protection of the remote control when not in use.
- ✓ New automotive-derived electrical system, ensuring greater reliability, energy efficiency, and simplified maintenance.
- ✓ Double articulation boom with active jib for a high operability in all construction site conditions.
- ✓ Max. side outreach of 10 m / 230 kg, with 8 m of Up & Over height.
- ✓ Hydraulically adjustable tracks width: more stability and traction to move around the building site or rough terrain.
- ✓ Proportional and simultaneous electro-hydraulic controls: efficiency and safety for operators.
- ✓ Automatic outriggers levelling: maximum easiness of use and safety.
- ✓ Permanent weight control device for improved safety and performance.
- ✓ Turret slewing 360° (not continuous): outstanding aerial accessibility in any work situation.
- ✓ Basket rotation ± 62°: complete placement on working site in any condition.
- ✓ New system with lever for emergency descent.
- ✓ Compact size, with limited overall outrigger footprint.
- ✓ Aluminium basket 1.50 x 0.70 x 1.10 m.
- ✓ 4 available engines: petrol, diesel, lithium, hybrid.

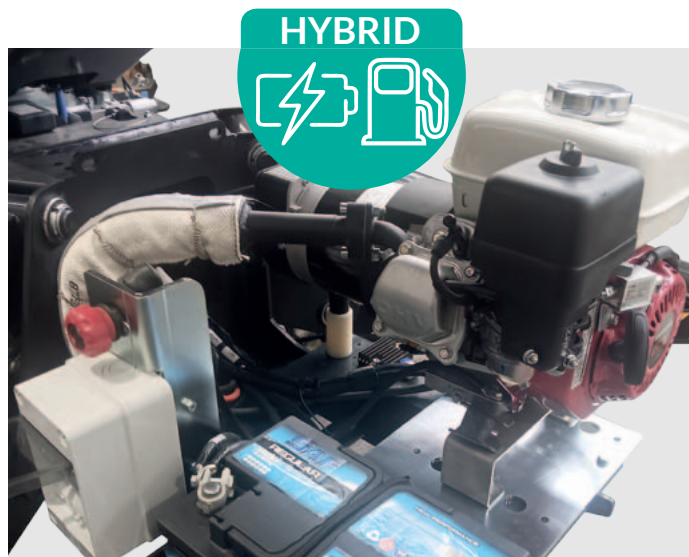


New removable control box with bigger display and easier operator interaction for better machine control.

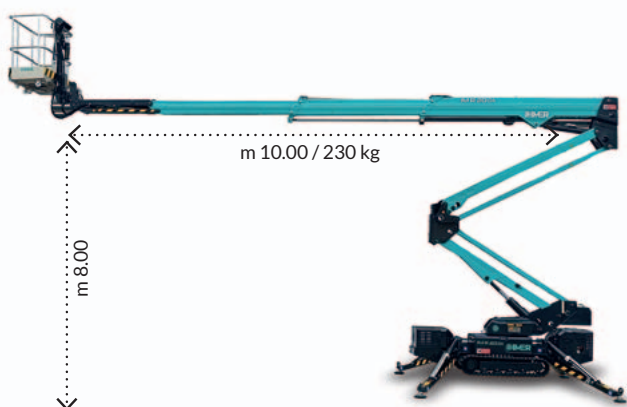
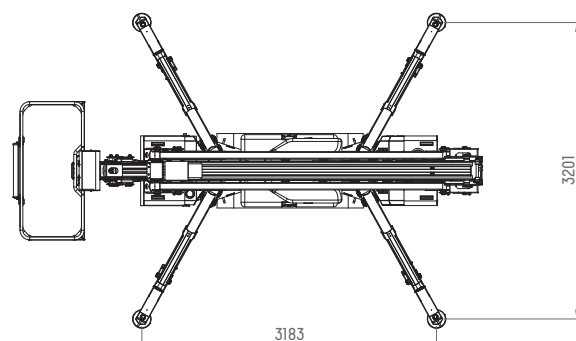
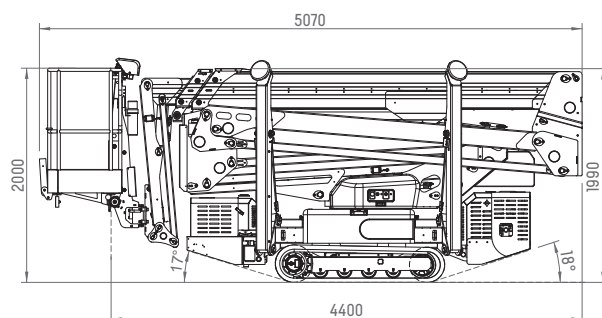
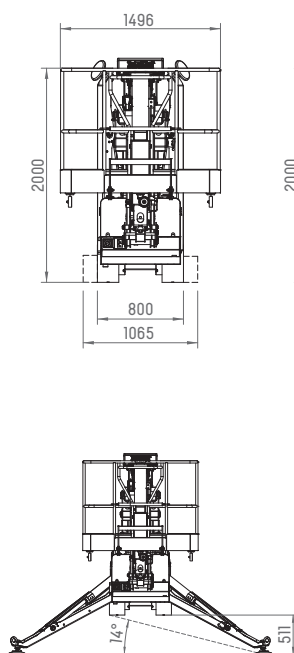
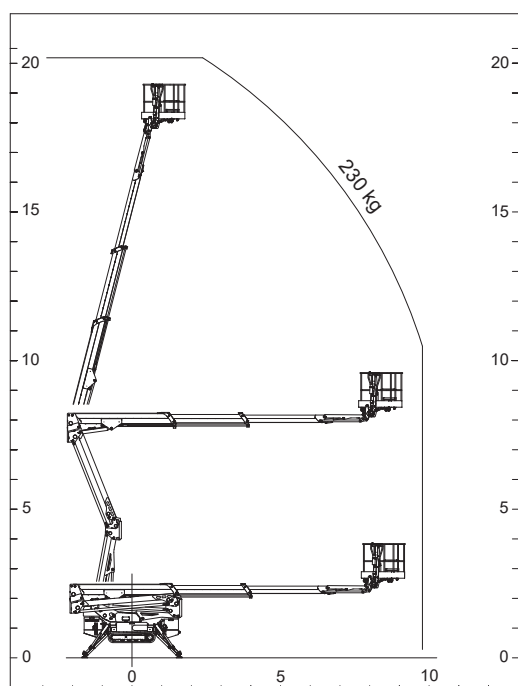




Lithium battery compartment (lithium version).



Petrol generator and lithium battery group (hybrid version).



IMR 20 DA				
		Petrol/diesel engine	Lithium	Hybrid
Working height	m		20	
Platform height	m		18	
Side outreach	m/kg		10 / 230	
Up & Over	m		8	
Turret slewing	(°)		360 (not continuous)	
Basket dimensions	m		1.50 x 0.70 x 1.10	
Overall outrigger footprint	m		3.18 x 3.20	
Driving speed	km/h	2	1.8	1.8
Gradeability	%		30	
Max load capacity	kg		230	
Electric motor	V/kW	230 / 2.2	48 / 4.5 AC low voltage	
Petrol engine Honda GX390	kW/rpm	8.7 / 3600	-	-
Diesel engine Kubota Z602	kW/rpm	12.5 / 3600	-	-
Lithium batteries	V/Ah	-	48 / 110	
Lithium batteries charger	V/A	-	48 / 50	
Petrol generator Honda GX160	kW/rpm	-	-	3.6 / 3600
Current supplied by generator	A	-	-	10
Transport length (without basket)	m		5.10 (4.40)	
Transport width (with extended tracks)	m		0.80 (1.10)	
Stowed height (with outrigger pads)	m		1.99 (2.03)	
Total weight of the machine	kg	2900 (petrol) 2980 (diesel)	2950	3000